

Release Notes for Version 5.13

November 2010

1.0 Release Notes for US Versions of RPS

1.1 Version 5.13 Compatibility

The US version of RPS is intended for use with the following control panels:

- D2000 Series¹
- D4112/D6112
- D6412/D4412
- D7212B1, D9112B1
- D8112 Series²
- D9000GV3/D9000GV2/D9000G/D9000 Series³
- DS7200 Series USA⁴
- Fire Alarm Control Panels (FACP)⁵

¹ D2212, D2112, D2012

To program a D2412 or D2812 control panel, use the D2212 control panel account.

² D8112G2, D8112G1, D8112G, D8112E1, D8112E, D8112A

³ D9412GV3/D7412GV3/D7212GV3, D9412GV2/D7412GV2/D7212GV2, D9412G/D7412G/D7212G, D9412/D9112/D7412/D7212, D9112B1/D7212B1

To create an account in RPS for either a D9412G or D7412G control panel, use either the D9412 or D7412 control panel type.

Use the **D7212G default.dsf** file on the RPS CD-ROM to create a D7212G account.

⁴ DS7240, DS7220

⁵ FPD-7024, D7024/DS9400, D9124 Fire Alarm Control Panels (FACP)

Use the D9124default.dsf file on the RPS CD-ROM to create a D9124 account.

Depending on your installation, some of these control panels might not be accessible.

1.2 Upgrading from Previous Versions of RPS

Automatic upgrading to the latest version of RPS is supported only from version 5.7 and later. For more information on upgrading RPS, refer to the *RPS Installation Guide* (P/N: 4998141259).

1.3 Microsoft Operating System Support

As of July 13, 2010, Microsoft stopped supporting Windows 2000. As a result, Bosch Security Systems, Inc. did not test the operation of RPS 5.13 on a Windows 2000 operating system. Bosch will not test future versions of RPS on Windows 2000.

1.4 Version 5.13 Enhancements

Support for GV3 Series v8.10 or greater control panels:

1.4.1 GV3 Series v8.10 or greater Enhancements

- Supports GV3 Series (v8.10 or greater) control panels
- Compatible with GV3 Series (v8.00 to v8.09) control panels
- Support for 32 areas and 16 keypads in Diagnostics
- History events now store the year and history list supports up to 818 events
- Ability to upgrade control panel accounts GV2/GV3 v8.00 to v8.09 to GV3 v8.10 or greater
- Enhancements made to communication protocol, including Authenticated Message, Challenge Sequence, and Anti-replay Keys
- Control panel-initiated Unattended Over Modem (UOM) and Unattended Over Network (UON) Services

**BOSCH**

1.5 Version 5.13 Installation Notes

- **Microsoft SQL Server Management Studio Express (SSMSE):** In most situations, it is not necessary to install SSMSE. However, if needed, a copy of SSMSE is included on the RPS CD-ROM. The version on the RPS CD-ROM supports 32-bit operating systems. Microsoft provides a 64-bit version that can be downloaded for free by typing “SQLServer2005_SSMEE_x64.msi” in the search window at www.microsoft.com.
- **Installing RPS from a Network Drive:** If you copy the contents of the RPS CD-ROM to a networked drive, the drive must be mapped to a drive letter in order for RPS to properly install on local computers connected to the networked drive. RPS cannot install from a networked drive that uses the Universal Naming Convention (UNC).
- **Directory Installation:** Do not install RPS in a directory with a space in its name (for example, “Program Files”).
- **Unattended Mode:**
 - If you plan to use Unattended Mode when installing RPS on a PC running Windows XP Pro or Vista, select **Use Existing Database** during the installation instead of changing file locations. You cannot use the Universal Naming Convention (UNC). Map a drive letter instead.

i Home versions of Microsoft's operating systems do not support Unattended Service.

- If Unattended Operation is installed, stop this service before upgrading RPS. To stop Unattended Operation, select **Unattended→Stop Service** from the Remote Programmer User Interface.

1.6 Version 5.13 Operation Notes

- **Creating a GV3 Series Control Panel Account:** When creating a new GV3 Series control panel account in RPS, be sure to select the correct firmware version on the Panel Info tab on the Panel Data – New window: Select **v8.00 thru v8.09**:



Or select **v8.10 or greater**:



- **License Folder Read/Write Permission:** If you copy the contents of the RPS CD-ROM to a local or network drive, you must change the Read/Write permission on the License folder. To change this permission:
 1. On the local or network drive where the RPS CD-ROM contents were copied to, go to **fscommand\RPS**.
 2. Right-click the License folder and select **Properties**.
 3. Under **Attributes**, uncheck the **Read-only** option and click **OK**.

1.7 Version 5.13 Fixed Items

- **Unattended Operation during Upgrade:** RPS now retains the previous setting for Unattended Service during an upgrade of RPS.
- **RPS 5.12 SP1 included in RPS 5.13:** The issues that were resolved in RPS 5.12 Service Pack 1 are now included in RPS 5.13. Refer to the *RPS v5.12 Service Pack 1 Technical Service Note* (P/N: F01U170401) for more information.

1.8 Version 5.13 Known Issues

1.8.1 Operating System Known Issues

- **Silent Installation does not execute with DX4010V2 Driver Version 5.4.29.0:** Silent installation requires drivers that support the 64-bit versions of Windows Vista and Windows 7. These drivers are available on the RPS CD-ROM in the **DX4010V2 USB Drivers** folder.
- **Windows Server 2003 Win Installer 3.1 Error Message:** During the installation of RPS, Win Installer 3.1 shows a failed installation message when installing RPS on a Windows Server 2003 computer.
- **User Account Control (UAC) on Windows Vista:** To ensure that the Unattended Service works as expected on a Windows Vista computer, disable the User Account Control feature.
- **Uninstalling RPS 5.13 on a Windows XP x64 SP2 Computer:** If you uninstall RPS 5.13 from a computer running Windows XP x64 SP2, you might receive the Error 1905 message:
C:\WINDOWS\SysWOW64\MSVBVM50.dll failed to unregister. HRESULT - 2147220472. Contact your support personnel.

This is a known Windows issue. Click **OK** to acknowledge the error and continue uninstalling RPS.

1.8.2 RPS Operation Known Issues

- **Year Display in Diagnostics:** RPS does not correctly display the year past 2029 in Diagnostics.
- **Language Settings for Windows Users Without Admin Rights:** If a Windows user who does not have admin rights on the RPS PC changes the default language setting (for example, from English to Spanish), the change is not preserved when RPS is closed and restarted. The setting reverts to the default language.
- **Changing the PC's Regional Settings Affects Date Displays:** If you change your RPS PC's regional settings, some date displays might not appear correctly.

- **Invalid Messages:** Some modems can cause RPS to generate an invalid RPS passcode message as a result of a busy phone line. Calling an invalid control panel type (for example, a D7024 account calling a D6412 control panel) does not always cause RPS to generate an Invalid Panel Type error message. An Invalid RPS Passcode message might appear instead.
- **Incoming Phone Call Indication:** RPS provides no indication of an incoming phone call.

1.8.3 Unattended Service Known Issues

- **Windows Users Without Admin Rights Cannot Turn Unattended Service On or Off:** Windows users who do not have admin rights on the RPS PC cannot turn Unattended Service on or off.
- **UOM and Hayes 1200 Modem:** Starting with RPS 5.13, the Hayes 1200 Modem is no longer supported for Unattended Over Modem (UOM) operation.
- **UOM Init String for a GV3 Series or DS7400XiV4 Account:** When using Unattended Over Modem (UOM) with a GV3 Series or DS7400XiV4 control panel account, use the modem init string for the DS7400XiV4 control panel.
- **PI-UOM/UON Changes trigger Unattended Service to run unexpectedly:** After a panel-initiated UOM/UON change, the Unattended Service runs without alerting the RPS operator.
- **Intermittent Connection over IP and "U Comm Failure" Message:** If there is an intermittent connection over IP, the control panel and RPS can become unsynchronized during a data Send. If this occurs, RPS logs a "U Comm Failure" message in the Activity List. There is no visible indication (at the control panel or RPS) other than the "U Comm Failure" message that indicates that the data send did not finish properly.
- **Baud Rates for Panel-initiated Unattended Over Modem (PI-UOM):** PI-UOM can only use 1200 baud. Baud rates of 300 and 4200 are currently not supported.
- **Panel-Initiated Unattended Over Network (PI-UON) and IP Encryption:** When IP encryption is used, RPS cannot determine which encryption key to use for the control panel calling into RPS. Do not enable IP encryption for the accounts that you wish to use PI-UON.

1.8.4 RPS Printing Known Issues

- **Printing the Program Record Sheet (PRS):** RPS might add extra blank pages when printing the PRS to the .rtf file format. Some PRS reports printed in .pdf or .rtf format might show unaligned data.
- **RPS Uses Default Printer for All But First Report in Multiple Report Group:** When printing multiple control panel reports, RPS sends only the first report to a selected printer other than the default printer. All subsequent reports in the request are sent to the default printer.

1.8.5 Help File Known Issues

- **F1 Not Available:** Pressing the F1 key might open the wrong help topic, or it might not open any help topic.
- **Help File Selections and Defaults:** Some of the control panel Help files show Blank as a valid selection, but RPS might show some of these fields as zero. Some programming defaults listed in the help files might not be accurate. Refer to the defaults in RPS in these cases.
- **Resizing Saved Exported Reports:** To print a saved exported file correctly, some manual resizing might be required for the selected printer.

1.8.6 D2000 Series Known Issues

- **Panel Event Window Not Working Properly:** The Panel Event Warning window does not work properly for all event levels when the **Continue, New Event** button is clicked. Instead of appearing only for new events, the window continues to appear for previously recognized events.
- **No Warning Message for Overwriting RF ID's (D2212 only):** RPS does not show a message warning against overwriting RF ID's due to differences between the ID codes programmed in the control panel and in RPS. Receive the data and then save it when initially connecting to control panels containing RF ID's.
- **Viewing/Printing Point Notes:** Only the first 64 characters of a Point Note are shown in the **Notes (Ref Only)** cell in the Panel Account window. If a Point Note is printed, only the first 64 characters are printed. To view the Point Note in its entirety, double-click the Point Note cell to open the **View Notes** window.

1.8.7 D6412/D4412 and DS7200 Series USA Known Issues

- **Panel Event Occurs:** If you are online and a Panel Event occurs, clicking the **Display Event Alert Help** button causes the Help window to cover up the Event Warning window. You cannot see the auto-terminate timer unless you close the Help window before the 30-second limit expires.
- **Call RPS at Test Time:** This function currently does not work.
- **Remote Program [#][4][3]:** If the control panel is programmed for callback, it does not call the RPS PC when [#][4][3] is pressed.

1.8.8 D7024 and DS9400 FACP Known Issues

- **History:** When viewing the FACP's history in RPS, *Program Start* and *Program Stop* events are not shown if history filters are used.
- **Delayed Retry Count Exceeded Error Message:** When RPS is connected to a DS9400i/DS9400M FACP and the control panel disconnects to report an alarm, it can take up to five minutes before RPS shows the *Retry Count Exceeded* error message.
- **Invalid Character in Silence Report Event Type:** The opening bracket character, “[”, might appear following the user identification under the *Details* column for a *Silence Report* event type when uploading the FACP's history log into RPS. This invalid character does not affect the operation of RPS or the control panel when online with RPS.
- **Programming a Multiplex I/O Point (DS9400M only):** RPS does not force the output half of a multiplex I/O point type to 0 (zero) for the output zone. It leaves the output zone at the previous setting before the point changed. Use the *Program Outputs/MUX Relay Outputs* section of the control panel's program record sheet to program the output half of the multiplex I/O point type.
- **Zone Outputs When Using a DS9465:** When a zone output for a DS9465 Input/Output Module is programmed, Function 63 (General Alarm – Non-silenceable) is always sent to the control panel regardless of the zone output function selected. Because this output function can be applied only to an input zone, the control panel ignores this selection.

1.8.9 D8112 Series Known Issues

- **D8112 Control Panel Report Error:** If an account exists without an account number, and Error 6003: The account information could not be read appears when attempting to print a Panel Report, open the account, edit the account, and save it. The report now works properly.
- **MemLog Start:** This function is not used.

1.8.10 D9112B1, D7212B1 Known Issues

- **Point Notes Fields:** The Point Notes fields located in **POINT ASSIGNMENTS→Point Assignments** are for reference only. Information entered in these fields is not sent to the control panel.
- **Message Limitation (Keypad Tab):** Although you can send messages to each keypad's (command center) address, only one message can be performed at a time.

1.8.11 D9412G/D9412, D7412G/D7412, D7212G/D7212, D9112 Known Issues

- **Ground Fault Restoral Event:** RPS does not show this event as a restoral event in the History List details.
- **Incorrect Maximum Value Allowed for Poll Rate:** RPS allows a maximum poll rate (**RADXAUX→Enhanced Communications**) setting of 65,535 sec for Paths 1 through 4. This value is incorrect. The correct maximum setting is 1,275 sec.
- **User Window Defaults:** Upgraded D9112B1/D7212B1 accounts do not properly preserve the 9000 Series User Group default (1) for each of the eight User Windows in **RADXSKED→User Group**. The upgraded account shows "1" as the default for User Window 1, "2" for User Window 2, "3" for User Window 3,..."8" for User Window 8.
- **Panel Sync Window Appears When Control Panel and RPS are Synchronized:** The Panel Sync Window might appear even if the control panel account and RPS are synchronized.
- **Passcode Rejected During Log % Full Call to RPS:** A call from the control panel to RPS caused by the Log Threshold % event results in RPS rejecting the passcode even if it is valid.

- **History: Relay Set and Relay Reset Events:** The Relay Set and Relay Reset events in the History window do not show which relay (A, B, or C) was activated when RPS performed a Relay Set or Reset.
- **"Invalid Passcode" Error Message:** If an invalid passcode is entered when using the Enhanced Direct or Network Communication method, a Retry Count Exceeded error message appears instead of an Invalid Passcode message.
- **Master Armed Instant Status (Area Tab):** RPS only displays the current status for Master Armed Instant in the Area tab. RPS cannot send this command to the control panel.
- **RF Point Low Battery Condition Not Included in Control Panel Upload (Points Tab):** 9000 Series control panels do not send RF point low battery conditions to RPS. The control panel's keypad shows Service RF Low Batt as expected. RPS shows Trouble.
- **Changing the Armed State of Disabled Areas (Area Tab):** Although certain areas in a control panel might be disabled, the armed status of these areas is still shown.
- **Message Limitation (Keypad Tab):** Although you can send messages to each command center address, only one message can be performed at a time.

1.8.12 D9412GV2/GV3, D7412GV2/GV3, D7212GV2/GV3 Known Issues

- **GV3 Series v8.10 or greater and Network Timeout Message:** If you attempt to establish an IP connection from a GV3 Series v8.10 or greater account in RPS to an older version G/GV2/GV3 Series control panel, you will receive a Network Timeout message. To ensure this issue is avoided, upgrade the control panel firmware to match the version supported by the RPS account.
- **GV3 Series v8.10 or greater and Hayes or Securcomm Modem Baud Rate Settings:** If you set the baud rate in the control panel and in the RPS Panel Communication Window to 2400 and you receive either an "Invalid RPS Passcode" or "Retry count exceeded" message, reset the baud rate to 1200 in both RPS and the control panel.

- **Route Group 8 Missing in Help File (GV3 only):** The GV3 Series control panels only support Route Groups 1-4. However, Route Group 8 is used to indicate a network route failure. If a network route failure occurs on a GV3 Series control panel, RPS shows this indication in the Details column on the History List.
- **Online Diagnostics Area Tab (D7212GV2/GV3 only):** The Diagnostics Area Tab for the D7212GV2 and GV3 accounts displays eight areas. The D7212GV2/GV3 control panels only support four areas.
- **Master Armed Instant Status (Area Tab):** RPS only displays the current status for Master Armed Instant in the Area tab. RPS cannot send this command to the control panel.
- **IP Address and Port Number Duplicate Entries (GV2 Series only):** RPS only validates IP address and port number entries and rejects duplicate entries for newly created GV2 Series control panel accounts. If RPS finds duplicate entries, it displays an error message and forces you to enter new values.

RPS does not validate entries if you upgrade a G Series control panel account to a GV2 Series control panel account, nor does RPS validate entries in accounts that were imported from earlier versions of RPS.

If duplicate entries exist in an upgraded account, and you edit either field, RPS displays an error message and resets the entry to 0.0.0.0. If you do not edit the duplicate entry in either field, RPS sends the values to the control panel without any validation.

- **Ground Fault Restoral Event:** RPS does not show this event as a Ground Fault Restoral event in the History List details. In the Events column, RPS shows “Restoral Report.” In the Details column, RPS shows “Area 1 Point N/A.”
- **Routing Selections do not Match Diagnostic Reports Selections:** To enable all Diagnostic Reports or disable Diagnostic Reports for Route Groups 1 through 4, select **Yes** or **No** for that category from **PANEL-WIDE PARAMETERS**→**Routing**. The only time you should select specific reports from **PANEL-WIDE PARAMETERS**→**Routing**→**Diagnostic Reports** is when you want to enable some diagnostic reports but not all. All Diagnostic Reports selections made from that location appear as “Custom” in the corresponding Route Group.

- **Invalid Relay Parameter Entries in Upgraded Accounts (D7212GV2 only):** An upgraded D7212GV2 account might contain invalid entries if the original D7212 or D7212G account contained a value between 25 and 64 in any of the relay parameters. The valid range for D7212GV2 relay parameters is 0 to 24, except for the Silent Alarm relay parameter. This parameter also allows additional entries of 60, 63, and 64 as alternate functions.
- **Panel Sync Window Appears When Control Panel and RPS are Synchronized (GV2 only):** The Panel Sync Window might appear even if the control panel account and RPS are synchronized.
- **RPS Override of Control Panel High Security Features:** For high security applications, the control panel provides features such as Two-Man Rule and Early Ambush that require two valid passcode entries to disarm an area. Disarming an area through the RPS Diagnostic window overrides these high security features without alerting the RPS operator.

1.8.13 FPD-7024 Known Issues

- **Alternate Communication Parameters for Computer Phone/IP Not Supported:** RPS does not support the three alternate communication parameters shown in **Program Accounts**→**Alternate Communications**→**Computer Phone/IP**.
- **Zoom® VFX 28.8 Modems:** Zoom VFX 28.8 modems are not compatible with RPS and the FPD-7024 FACP.
- **History Filter Might List Events in Wrong History Group:** Events that appear in a History Group list might not filter correctly for that group.

1.9 Miscellaneous

- Use the **D9124default.dsf** file on the RPS CD-ROM to create a D9124 account.
- To create an account in RPS for either a D9412G or D7412G control panel, use either the D9412 or D7412 control panel type.
- Use the **D7212G default.dsf** file on the RPS CD-ROM to create a D7212G account.
- To program a D2412 or D2812 control panel, use the D2212 control panel account.
- **Microsoft SQL Server Management Studio Express (SSMSE):** In most situations, it is not necessary to install SSMSE. However, if needed, a copy of SSMSE is included on the RPS CD-ROM. The version on the RPS CD-ROM supports 32-bit operating systems. Microsoft provides a 64-bit version that can be downloaded for free by typing “SQLServer2005_SSMEEX64.msi” in the search window at www.microsoft.com.

2.0 Release Notes for International Versions of RPS

2.1 Version 5.13 Compatibility

International versions of RPS are intended for use with the following control panels:

- DS7200 Series International¹
- DS7400XiV4-EXP²
- Easy Series V2+ and V3+

¹ DS7240V2-EXP/DS7240V2-FRA/DS7240V2-SWE/DS7240V2-UK, DS7220V2-EXP/DS7220V2-FRA/DS7220V2-SWE/DS7220V2-UK, CC7240-AUS, DS7240/DS7220, DS7240csc, DS7240-EXP/DS7240-HUN/DS7240-NOR/DS7240-SPA (v1.52 and higher)/DS7240-SPA (v1.05)/DS7240-SWE/DS7240-UK, DS7220-SPA

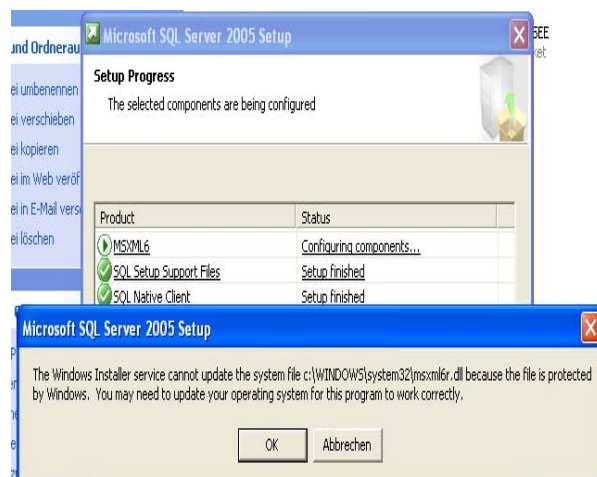
² Use the DS7400XiV4-EXP account to program the DS7400XiV4-BEL, BEF, SWE, SPA, NOR, and FRA control panels. To create a country-specific version of the DS7400XiV4-EXP account, use the appropriate .dsf file located in **X:\Country-Specific Accounts (Exported Files)** on the RPS CD-ROM. “X” = the letter of your CD-ROM drive.

2.2 Easy Series v3.2 or greater Enhancements

Low Signal Strength in Diagnostics: With firmware version 3.2 or greater, the Easy Series control panel now supports a Low Signal Strength indication on the Points tab and Outputs tab.

2.3 Version 5.13 Installation Notes

- **Update Operating System Message when Installing SQL Express:** If you install SQL Express on any non-English version of Windows XP SP3, a dialog might appear recommending you to update your operating system. This message can be ignored. Click **OK** to continue installing SQL Express.



- **Cannot Update System File Message when Installing SQL Express:** When installing SQL Express on a non-English version of Windows XP SP3, the following error message might appear: “The Windows Installer service cannot update the system file C:\WINDOWS\system32\msxml6r.dll because the file is protected by Windows.” If this error message appears, cancel the installation and perform the following steps:
 1. Make a backup copy of the system registry.
 2. Navigate to the registry key on the RPS CD-ROM at **X:\Windows File Protection Registry Update**. “X” refers to the letter assigned to the PC’s CD-ROM drive.
 3. Double-click the **WindowsFileProtection.reg** file.
 4. Restart the PC and reinstall SQL Express.

- **Upgrading RPS in a Language Other Than English:** If you are using the English version of RPS (version 3.7.020 or higher) and are upgrading to a version in a language other than English, uninstall the existing version first, then install the non-English version.
- **Corrupt Account Database on a Turkish Operating System:** If you change the original settings of the RPS computer after installing RPS on a Turkish version of a supported Windows operating system, the account database will become corrupted.

2.4 Version 5.13 Known Issues

2.4.1 RPS Operation Known Issues

- **RPS and Door Access Control Module (DACM) Software Compatibility:** If you install RPS and the DACM software on the same PC, the DACM software might not start. Uninstall the DACM software, and then reinstall it.
- **Importing Accounts from Older Versions of RPS:** Accounts imported from older versions of RPS do not appear in the Panel List regardless of a successful import message from RPS. This issue applies only to non-English versions of RPS installed on compatible Microsoft Windows operating systems.

2.4.2 DS7200 Series International Known Issues

- **Creating Country-Specific Versions of DS7200V2-EXP Accounts:** Use the appropriate .dsf file located in **X:\Country-Specific Accounts (Exported Files)** on the RPS CD-ROM to create country-specific versions of the DS7200V2-EXP account with country-specific defaults. "X" = the letter of your CD-ROM drive.
- **European Characters Not Supported in DS7200V2-EXP Account:** The following characters do not appear in RPS when using the DS7240V2-EXP or DS7220V2-EXP accounts: σ, π, Σ, Π, Ω, Ξ, ζ, δ, Δ, ε, Φ, Γ, γ, η, ι, λ, Λ, κ, Ø, ω, ρ, Θ, Ψ, α, τ, θ, ÿ, Ä, ä, Ö, ö.
- **Open Condition on a DACM Door Contact (DS7200V2 only):** An open condition on a DACM door contact appears as a shorted condition in RPS diagnostics.
- **Missing RF Receiver Appears as Not Programmed and Normal (DS7200V2-EXP, SWE, UK):** RF receivers that the control panel declares as missing appear as Not Programmed and Normal in RPS diagnostics.

- **Panel Event Occurs:** If you are online and a Panel Event occurs, clicking the **Display Event Alert Help** button causes the Help window to cover up the Event Warning window. You cannot see the auto-terminate timer unless you close the Help window before the 30-second limit expires.
- **Call RPS at Test Time:** This function currently does not work.
- **Remote Program [#][4][3]:** If the control panel is programmed for callback, it does not call the RPS PC when [#][4][3] is pressed.
- **Zones Diagnostic Status for Missing or Restored Devices (DS7240-UK and all DS7200V2 types):** Differences between the information shown on the Zones Diagnostics tab and the control panel's history log can differ when devices are missing and then physically restored. RPS registers a restored device's electrical state as Normal; however, the control panel's keypad still shows Trouble until the Installer's PIN is entered.
- **Zones in Tamper Alarm not indicated in Diagnostics (DS7240-UK only):** RPS does not indicate tamper alarms in Diagnostics.
- **Missing RF Receivers appear as "Not Programmed":** RPS does not indicate if an RF receiver is missing in Diagnostics. "Not programmed" appears for Devices 50 and 51 (RF receiver device numbers).
- **Zone Text and Location Number Missing in Zones Tab:** The Zone tab does not show zone text and location numbers for zones with Chime Mode as their zone function assignments.

2.4.3 DS7400XiV4-EXP Known Issues

- **Creating Country-Specific Versions of DS7400XiV4-EXP Accounts:** Use the appropriate .dsf file located in **X:\Country-Specific Accounts (Exported Files)** on the RPS CD-ROM to create country-specific versions of the DS7400XiV4-EXP account with country-specific defaults. "X" = the letter of your CD-ROM drive.

- **Open Condition on a DACM Door Contact:** An open condition on a DACM door contact appears as a shorted condition in RPS diagnostics.
 - **Selecting Current Events option in History Events window duplicates last event retrieved:** Retrieving current events from the DS7400XiV4 Control Panel always retrieves the last history event, even if there are no new current events. This causes a duplicate entry to appear in the history list.
 - **Incorrect Maximum Value Allowed for Heartbeat Interval:** RPS allows a maximum heartbeat interval (**Alternate Comms**→**Alternate Communications**) setting of 65,535 sec. This value is incorrect. The correct maximum setting is 1,275 sec.
 - **Daylight Saving Time Default Error:** RPS shows **Disabled** as the default for **System Parameters**→**Daylight Savings**. The correct default is **Enabled**. The Help file also shows **Disabled** as the default.
 - **Invalid Keypad Entries Might Prevent RPS Fields From Operating Correctly:** If you enter a programming setting incorrectly from the keypad, and then RPS receives this entry, the corresponding cell in RPS no longer works correctly. If you cannot open a cell in the RPS account, check the corresponding programming in the control panel for a possible error.
 - **Alarm Verification Not Supported:** Alarm Verification disables any zone where this feature is turned on.
 - **No Error Message for Diagnostic Beeper Outputs (SWE, FRA, and SPA only):** RPS does not show an error message that prevents you from selecting **ON** at the same time for the Resettable Beeper and the Permanent Beeper in **Diagnostics**→**Output Tab**.
 - **RPS Displays RF Receiver Faults Incorrectly:** RPS shows RF receiver faults as **RF Keypad Fault**. The correct text is **Radio Comm Fault**.
 - **Configuring a Fire Zone for Bypassing (DS7400Xi-SWE only):** You can configure a fire zone for bypassing from keypad programming; you cannot, however, configure a fire zone for bypassing from RPS.
 - **Tamper-Wired Zones Show Open Instead of Short:** If you program a tamper-wired zone for **Trouble on Open** and you short the zone, RPS shows **Open** instead of **Short** in the zone diagnostics tab.
- #### 2.4.4 Easy Series V2+ and V3+ Known Issues
- **Select Modem Operation:** When using **Select Modem in Config**>**System**>**Modem**, the **Apply to all Panel Groups** option does not apply to the modem selection for an Easy Series control panel. You must select the modem for an Easy Series control panel separately from all other control panels.
 - **Default Change in Destination Heartbeat Parameters (Easy Series V3+ only):** The default value for the Destination Heartbeat parameters (**Routes 1 and 2, Primary and Backup**) is changed from 5 minutes to 0 minutes (**disabled**). This change was made to reduce cost incurred from wireless service providers when using the ITS-DX4020-G GPRS/GSM IP Communicator.
 - **No Point Numbers Shown for 24-Hour Trouble and Restoral Events:** In RPS 5.10, the event history for an Easy Series control panel account does not show the associated point numbers for **24-Hour Trouble** and **24-Hour Trouble Restoral** events.
 - **Incorrect Status in History for Failed and Pending Reports:** If RPS retrieves history events from an Easy Series control panel with firmware version 3.0 installed, the history log shows an event report status of **Failed** when the actual status is **Pending**. The history log also shows an event report status of **Pending** when the actual status is **Failed**.
 - **DX4020 Firmware:** If the DX4020 is used to provide a network connection between the control panel and RPS, ensure the DX4020 is using firmware version 2.23 or later for proper operation.
 - **No User Number Shown for Key Fob Duress Events:** RPS does not show in the **History List** the user number for **Duress** events initiated from a wireless key fob. To identify the user number, listen to the event in the control panel event history, or look at the event sent to the central station receiver.

- **Cancel Events Show as Points instead of Users:** In the History List, Cancel events show as point numbers instead of user numbers in the Details column.
- **Keyfob Low Battery Acknowledge:** This parameter is not supported by RPS. Setting this parameter has no effect on RPS or the control panel.
- **Incorrect External Power Messages for Wireless Points:** The External Power field on the Diagnostics Points tab incorrectly shows “Present” or “Missing” for the wireless door/window contact, mini recessed door/window contact, PIR detector, smoke detector, and glass break detector. These messages apply only to the wireless relay module and siren.
- **Cross Zone Time and Confirmed Alarm Operation:** If you select either of the Confirmed Alarm options for **Point Alarm Verification**, RPS only allows a minimum entry of 1800 sec. (30 min.) for **Cross Zone Timer**. If you enter a value less than 1800 sec., the control panel adjusts this entry to 1800 sec., but does not update the cell display accordingly in RPS. For example, if you set **Cross Zone Timer** to 1500 sec., the control panel adjusts this setting to 1800 sec., but RPS continues to show 1500 sec. as the entry. The maximum entry of 3600 sec. (60 min.) is unaffected.

3.0 Trademarks

Adobe is a registered trademark of Adobe Systems, Inc. in the United States and/or other countries.

InstallShield is a registered trademark and service mark of Flexera Software in the United States and other countries.

Microsoft, ActiveX, Windows 7, Vista, XP, and 2000 are either registered trademarks or trademarks of Microsoft Corporation in the United States and/or other countries.

Zoom is a registered trademark of Zoom Telephonics, Inc.

Trademark names are used throughout this document. In most cases, these designations are claimed as trademarks or registered trademarks in one or more countries by their respective owners. Rather than placing a trademark symbol in every occurrence of a trademark name, Bosch Security Systems, Inc. uses the names only in an editorial fashion and to the benefit of the trademark owner with no intention of infringing the trademark.

